

THE COLLECTION

DISCOVER THE LATEST WORKPLACE FASHIONS



BUSINESSWEAR
HOSPITALITYWEAR

CHEFSWEAR
BEAUTY & HEALTHCARE





CONTENTS

What's New	4
Our Sustainable Story	5
Ethical Policy	6 - 7
Shirts	8 - 37
Waistcoats	38 - 39
Ties & Scarves	40 - 45
Trousers & Chinos	46 - 48
Knitwear	49 - 54
Tees	55 - 57
Polo Shirts	58 - 69
Outerwear	70 - 73
Face Masks & Coverings	74 - 75
Aprons & Tabards	76 - 113
Chefswear	114 - 131
Beauty & Spa	132 - 139
Salon & Healthcare	140 - 143
Size Guide	144 - 145
Index	146 - 147

Our supply chain

Our methods of sourcing, manufacturing and production are regulated and certified by some of the world's leading organisations.



WHAT'S NEW FOR 2022

Building on our sustainable collection, we are pleased to introduce some exciting new styles that have been sourced and manufactured in a more environmentally friendly manner. These styles tell a sustainable story in relation to fabric composition and production methods and have been awarded with certifications of environmental and social compliance.

RESPONSIBLY SOURCED

Our 'Barley' Contrast Stitch Bib Apron is a new apron made with a combination of sustainable cotton and recycled polyester, whilst our 'Regenerate' Bib Apron is born from offcuts of denim fabric that have been shredded up and regenerated to form this beautiful vintage-inspired style.

Recognising that many people working in the hospitality sector prefer a more casual solution to shirting, we have introduced a duo of sustainable t-shirts. With a colour palette that complements our Artisan Collection of aprons, these 'Comis' tees are styled with a narrow crew-neck collar and single button placket for a pleasing design feature.

SPUN DYED TO LAST

Polo Shirts are one of the most versatile styles in our collection

and we've added a recycled polyester version that has been constructed using a process called Spun Dyeing, meaning that less water, less chemicals and less CO₂ are used when dye is added to the fabric.

Another two styles that enjoy the eco-friendly benefits of being spun dyed are our new his and hers Zip-Through Sweats, which act as a smart outerwear layer with a corporate edge. Spun dyed fabrics boast excellent colour fastness from UV light and repeated washing, resulting in styles that will keep their colour truer - for longer.

WELCOME ADDITIONS

We've introduced a set of his and hers 'Artisan' Fleece Gilets into our mainstream collection. With many hospitality venues now set up to serve comfortably outdoors, we expect this style to be a popular choice as staff seek to keep warm - whilst still maintaining a professional look. Outside of the hospitality sector, these gilets make for a smart corporate and leisurewear style and look great over a shirt.

There are two new colour additions to our best-selling PR150 and PR154 aprons and customer demand has seen us develop a women's version of the 'Grandad' Banded Collar Shirt which is fitted with bust and back darts for a more feminine fit.

81

71

12

59



OUR SUSTAINABLE STORY

When you see this 'SUSTAINABLE' logo you can be assured that you are choosing a style that has been made in a more environmentally friendly manner in relation to the fabric composition and methods of production.

These logos will also help you make a more informed decision when selecting your uniforms.



Cotton sourced through the Better Cotton Initiative programme.



Polyester recycled from post-consumer plastics.



Cotton produced and certified to organic agricultural standards.



Colour dye added to the fabric through a more environmentally friendly process called spun dyeing.



Cotton derived from denim fabric which has been broken down and regenerated to form a new garment.



Standard 100 by Oekotex® certification demonstrates that no harmful chemicals are used at any stage of product production.



Cotton grown and cultivated on farms that are certified by the Fairtrade Foundation.

By sourcing organic, sustainable and Fairtrade cotton, along with recycled plastics and using spun dyed production methods, here's just some of the ways that we are reducing our carbon footprint to benefit the environment.



LESS WATER CONSUMPTION



NO PESTICIDES USED



PLASTICS SAVED FROM LANDFILL



BIO-DEGRADABLE & COMPOSTABLE PACKAGING

To learn more about our sustainable targets, visit www.premierworkwear.com/sustainability



ETHICAL POLICY

PEOPLE, PRODUCTION & THE PLANET

At Premier we take our Corporate Social Responsibility very seriously and we continue to invest to ensure that the long-term vision for the company is sustainable in relation to the environment and the people that live and work alongside us. We are able to provide you with copies of certifications of compliance, so you can be assured that we are working to the highest ethical, social and environmental standards we can.

We insist that our manufacturing partners have one or more of the following audits.

WRAP (Worldwide Responsible Accredited Production)

BSCI (Business Social Compliance Initiative)

SMETA (Sedex Members Ethical Trade Audit)

WORLDWIDE RESPONSIBLE ACCREDITED PRODUCTION (WRAP)

WRAP is an independent body which gives certification to factories that meet criteria in relation to facilities, production and working practices for employees.

Visit www.wrapcompliance.org to learn more about WRAP accreditation.

AMFORI BUSINESS SOCIAL COMPLIANCE INITIATIVE (BSCI)

The amfori Business Social Compliance Initiative (BSCI) is an industry-driven movement that aims to monitor and assess workplace standards across the global supply chain.

Visit www.amfori.org for more information on the BSCI initiative.

SEDEX MEMBERS ETHICAL TRADE AUDIT (SMETA)

Sedex is one of the world's leading ethical trade membership organisations, working with businesses to improve working conditions in global supply chains.

Visit www.sedex.com to learn more.

All of the Premier garments that are produced outside of the United Kingdom have been made in either WRAP, BSCI or SEDEX audited factories. The garments that are produced in the UK are made in factories that adhere to 'European Agency Health and Safety at Work' regulations.

OEKOTEX® STANDARD 100

Standard 100 by Oeko-tex® is an international standard that provides assurances that textiles and accessories have not been made with restricted chemicals and substances that can be harmful to health. Products with the Standard 100 label attached give a guarantee that each component of the product has been made to a high standard of product safety.

We have achieved Standard 100 by Oeko-tex® certification for certain product types within our range. We are continuously working with our supply chain to add more products and components to our certification.



SHIRTS

CORPORATE & CASUAL SHIRTING

A shirt is the basic building block to any uniform and we have a whole hosting of shirting options for you to choose from. Colourful poplins to cotton rich oxfords, checkered choices to chic chambray styles, discover an interesting range a men's and women's shirts in a large range of sizes.



THE ORIGINAL POPLIN SHIRT

The Everyday Shirt For Everybody

Long Sleeve Poplin Shirt ■ 65% Polyester, 35% Cotton, 105gsm, 27 colours

PR200 Men's: Formal collar styling, Left chest open Mitred pocket, Double button fastening on the cuff ■ Sizes: 14.5"/37cm – 23"/56cm*

PR300 Women's: Soft collar styling, Rounded bottom hem, Styled with bust and back darts ■ Sizes: 6/2XS – 30/8XL*

Short Sleeve Poplin Shirt ■ 65% Polyester, 35% Cotton, 105gsm, 27 colours

PR202 Men's: Formal collar styling, Left chest open Mitred pocket, Self coloured buttons ■ Sizes: 14.5"/37cm – 23"/56cm*

PR302 Women's: Soft collar styling, Rounded bottom hem, Styled with bust and back darts ■ Sizes: 6/2XS – 30/8XL*

* Men's sizes 20"/50cm, 21"/52cm, 22"/54cm and 23"/56cm only available in selected colours

* Women's sizes 28/7XL and 30/8XL only available in selected colours



TAILORED
FIT

EASY
CARE



27

Colours



'GRANDAD' SHIRT



MODERN
FIT

Banded Collar 'Grandad' Long Sleeve Shirt ■ 65% Polyester, 35% Cotton, 115gsm, Colour: White

PR258 Men's: Classic banded 'Grandad' collar with top button fastening, Double button cuff ■ Sizes: **XS/30" – 3XL/54"**

PR358 Women's: Double button cuff and sleeve guard, Bust back darts, Pearlised buttons ■ Sizes: **XS/8 – 2XL/18**



PR258

NEW

PR358



PR305

PR204



PR305 Women's Three-Quarter Sleeve Blouse ■ Soft collar styling, Three-quarter sleeves, Styled with bust and back darts ■ 65% Polyester, 35% Cotton, 105gsm/115gsm White ■ Sizes: **6/2XS - 26/6XL** (Size 6/2XS in Black & White only) ■ 7 colours



TAILORED
FIT

PR204 Men's Long Sleeve Slim-Fit Poplin Shirt ■ Formal collar styling, Double button fastening on the cuff, Fitted style ■ 65% Polyester, 35% Cotton, 105gsm ■ Sizes: **14.5"/37cm - 17.5"/44.5cm** ■ 5 colours



SLIM
FIT



PR346

PR246

STRETCH-FIT POPLIN

Stretch-Fit Cotton Poplin Short Sleeve Shirt ■ 97% Cotton, 3% Elastane, 115gsm, 4 colours

PR246 Men's: Seamless placket, Cut-away collar, Soft and stretchy fabric
■ Sizes: **XS/30"** – **4XL/58"**

PR346 Women's: Seamless placket, Styled with bust and back darts, Soft and stretchy fabric
■ Sizes: **XS/8** – **3XL/20**



SILVER

WHITE

PALE BLUE

BLACK

Stretch-Fit Cotton Poplin Long Sleeve Shirt ■ 97% Cotton, 3% Elastane, 115gsm, 4 colours

PR244 Men's: Seamless placket, Cut-away collar, Two button adjustable cuff ■ Sizes: **XS/30"** – **4XL/58"**

PR344 Women's: Seamless placket, Styled with bust and back darts, Two button adjustable cuff ■ Sizes: **XS/8** – **3XL/20**

MODERN
FIT



STRETCH



PR244

PR344



SUPREME POPLIN

For increased wear and durability

Short Sleeve Supreme Poplin Shirt ■ 65% Polyester, 35% Cotton, 125gsm, 3 colours

PR209 Men's: Offering a heavier fabric construction, Formal collar styling, Two button fastening on the collar stand ■ Sizes: **14.5"/ 37cm – 19"/48cm**

PR309 Women's: Offering a heavier fabric construction, Styled with bust and back darts, Two button fastening on the collar stand ■ Sizes: **8/XS – 26/6XL**

Long Sleeve Supreme Poplin Shirt ■ 65% Polyester, 35% Cotton, 125gsm, 3 colours

PR207 Men's: Offering a heavier fabric construction, Formal collar styling, Two button fastening on the cuff ■ Sizes: **14.5"/ 37cm – 19"/48cm**

PR307 Women's: Offering a heavier fabric construction, Styled with bust and back darts, Two button fastening on the cuff ■ Sizes: **8/XS – 26/6XL**

MODERN
FIT

EASY
CARE



SUPREME
POPLIN



PREMIER
UNIFORMS THAT WORK FOR YOU

40°



SECURITY SHIRTS

Long Sleeve Security Shirt ■ Formal collar styling, Two Mitred button down chest pockets, Tabs for application of Epaulettes on the shoulders ■ 65% Polyester, 35% Cotton.

PR210 Men's: 105gsm, 3 colours ■ Sizes: 14.5"/37cm – 19"/48cm

PR310 Women's: 115gsm, *1 colour ■ Sizes: 8/XS – 26/6XL

CLASSIC FIT

Short Sleeve Security Shirt ■ Formal collar styling, Two Mitred button down chest pockets, Tabs for application of Epaulettes on the shoulders ■ 65% Polyester, 35% Cotton.

PR212 Men's: 105gsm, 3 colours ■ Sizes: 14.5"/37cm – 19"/48cm

PR312 Women's: 115gsm, *2 colours ■ Sizes: 8/XS – 26/6XL



SECURITY ACCESSORIES

PR700 Work Tie ■ Plain colour styling, Blade width 3.25"/8cm ■ 100% Polyester ■ Wipe clean only ■ 6 colours



PR710 Clip-on Work Tie ■ Clip-on version of PR700, Steel clip attachment, Blade width 3.25"/8cm ■ 100% Polyester ■ Wipe clean only ■ 6 colours



PR715 Epaulettes ■ Adjustable tear release fastening, Embroidery area 9cm x 5cm, Fabric match PR700, PR710 & PR711 ■ 100% Polyester ■ Wipe clean only ■ 2 colours



PR711 Women's Clip-on Cravat ■ Steel clip attachment, Complements PR710 Clip-on tie ■ 100% Polyester ■ Wipe clean only ■ 1 colour



History of the OXFORD WEAVE

The Oxford cloth was created in a Scottish mill in the late 1800s, alongside three other cloths all named after the famous universities of Harvard, Cambridge and York. Oxford is the only fabric that survives today and Premier has plain and striped styles available, for a highly versatile and preppy wardrobe staple.

Identifying as a dress shirt, the Oxford is ideal for business or casual attire and has style accents that define it from traditional dress shirts because of the button down collar and the raised basket-woven fabric appearance.



OXFORD STRIPE

Cotton Rich Oxford Stripes Shirt ■ 60% Cotton, 40% Polyester, 135gsm, 5 colours

PR238 Men's: Classic button-down collar, Contrast coloured inner neckband and cuff, Two button adjustable cuff ■ Sizes **5/34" – 3XL/54"**

PR338 Women's: Button-down collar on the underside, Contrast coloured inner neckband and cuff, Two button adjustable cuff ■ Sizes: **XS/8 – 2XL/18**





Long Sleeve Signature Oxford Shirt ■ 70% Cotton, 30% Polyester, 135gsm, 4 colours
PR234 Men's: Button-down collar, Left chest open mitred pocket, Double button cuff ■ Sizes: **14.5"** / 37cm – **19"** / 48cm
PR334 Women's: Soft collar styling, Rounded bottom hem, Double button cuff ■ Sizes: **8/XS** – **26/6XL**

Signature OXFORD



Short Sleeve Signature Oxford Shirt ■ 70% Cotton, 30% Polyester, 135gsm, 4 colours
PR236 Men's: Button-down collar, Left chest open mitred pocket, Rounded bottom hem ■ Sizes: **14.5"** / 37cm – **19"** / 48cm
PR336 Women's: Soft collar styling, Rounded bottom hem, Bust and back darts ■ Sizes: **8/XS** – **26/6XL**



PR352

PR252

‘MAXTON’ CHECK LONG SLEEVE SHIRT

‘Maxton’ Check Long Sleeve Shirt ■ Button-down collar on the underside, Soft collar styling, Single button cuff ■ 65% Polyester, 35% Cotton Yarn Dyed Poplin, 110gsm, 5 colours.

PR252 Men’s sizes: S/34” – 3XL/54” ■ PR352 Women’s sizes: XS/8 – 2XL/18



LIGHT BLUE/WHITE

NAVY/WHITE

SILVER/WHITE

STEEL/BLACK

RED/BLACK



MODERN
FIT

EASY
CARE

GINGHAM COTTON SHIRTS

Long Sleeve Gingham Shirt ■ 100% Cotton Yarn Dyed Poplin, 115gsm, 4 colours

PR220 Men's: Soft collar styling, Two button adjustable cuff, Modern fit ■ Sizes: **XS/30"** – **3XL/54"**

PR320 Women's: Soft collar styling, Two button adjustable cuff, Styled with bust and back darts ■ Sizes: **XS/8** – **3XL/20**



Short Sleeve Gingham Shirt ■ 100% Cotton Yarn Dyed Poplin, 115gsm, 4 colours

PR221 Men's: Soft collar styling, Curved hem, Modern fit ■ Sizes: **XS/30"** – **3XL/54"**

PR321 Women's: Soft collar styling, Curved hem, Styled with bust and back darts ■ Sizes: **XS/8** – **3XL/20**



**MODERN
FIT**



NAVY/WHITE

LIGHT BLUE/WHITE

BLACK/WHITE

RED/WHITE



CHAMBRAY SHIRT ORGANIC & FAIRTRADE CERTIFIED

Chambray Shirt - Organic & Fairtrade Certified ■ Two chest pockets with combined pen pocket to the left ■ Double button cuff for adjustment with a single button sleeve guard ■ Button-down collar on the underside ■ 100% Organic Cotton, Fairtrade Certified, 160gsm, 2 colours
PR247 Men's sizes: S/34" – 3XL/54" ■ **PR347** Women's sizes: XS/8 – 3XL/20



COTTON COMFORT –
SUSTAINABLY SOURCED





JEAN STITCH DENIM SHIRTS

Jean Stitch Denim Shirt ■ 100% Cotton Ring Spun Denim, 155gsm, 2 colours

PR222 Men's: Contrast stitch details, Left chest button-down chest pocket, Buttoned cuff and sleeve guard ■ Sizes: **XS/30"** – **3XL/54"**

PR322 Women's: Contrast stitch details, Two button-down chest pockets, Buttoned cuff and sleeve guard ■ Sizes: **XS/8** – **3XL/20**



MODERN
FIT

100%
COTTON

COTTON SLUB CHAMBRAY SHIRTS



Cotton Slub Chambray Long Sleeve Shirt ■ Slub yarn for texture and personality in the fabric, Soft collar styling, Two button adjustable cuff ■ 100% Cotton, 115gsm, 3 colours.
PR245 Men's sizes: S/34" – 3XL/54" ■ **PR345** Women's sizes: XS/8 – 2XL/18

'MULLIGAN' CHECK SHIRTS



'Mulligan' Check Long Sleeve Shirt ■ Roll-sleeve option with button fastening on the upper arm, Narrow soft collar styling, Curved hem ■ 100% Cotton Yarn Dyed Poplin, 115gsm, 4 colours.
PR250 Men's sizes: S/34" – 3XL/54" ■ **PR350** Women's sizes: XS/8 – 2XL/18



■ 100% Cotton Yarn Dyed Poplin fabric ■ Roll-sleeve option with button and tab fastening



'SIDEHILL' CHECK SHIRTS



'Sidehill' Check Long Sleeve Shirt ■ Roll-sleeve option with button fastening on the upper arm, Narrow soft collar styling, Curved hem ■ 100% Cotton Yarn Dyed Poplin, 115gsm, 1 colour.
PR256 Men's sizes: S/34" – 3XL/54" ■ PR356 Women's sizes: XS/8 – 2XL/18



■ Roll-sleeve option with button and tab fastening



'GINMILL' CHECK SHIRTS



'Ginmill' Check Long Sleeve Cotton Shirt ■ Roll-sleeve option with button fastening on the upper arm, Narrow soft collar styling, Curved hem ■ 100% Cotton Yarn Dyed Poplin, 115gsm, 1 colour.
PR254 Men's sizes: S/34" – 3XL/54" ■ PR354 Women's sizes: XS/8 – 2XL/18



■ Soft collar styling



ROLL-SLEEVE BAR SHIRT

Roll-Sleeve Poplin Shirt ■ Button fastening on upper arm, Left chest vented pocket, Soft collar styling ■ 65% Polyester, 35% Cotton, 105gsm, 1 colour.

PR206 Men's sizes: S/34" – 2XL/50" ■ **PR306 Women's sizes: XS/8 – 2XL/18**

**TAILORED
FIT**



'CROSS-DYE' BAR SHIRT

Roll-Sleeve 'Cross-Dye' Poplin Shirt

■ 65% Polyester, 35% Cotton, 105gsm, 2 colours

PR217 Men's: Soft collar styling, Cross-dye textured fabric appearance, Roll-up sleeve with button fastening on the upper arm ■ Sizes: **XS/30" – 3XL/54"**

PR317 Women's: Soft collar styling, Cross-dye textured fabric appearance, Bust and back darts ■ Sizes: **XS/8 – 3XL/20**



■ Roll-up sleeve with button fastening



■ Left chest vented pocket

■ Roll-up sleeve



WAISTCOATS

READY FOR SERVICE

Hospitality Waistcoat ■ 65% Polyester, 35% Cotton, 195gsm, Colour: Black

PR620 Men's: Self-fabric back, Two functional watch pockets, Five button fastening ■ Sizes: **S/36" – 2XL/52"**

PR621 Women's: Self-fabric back, Two functional watch pockets, Four button fastening ■ Sizes: **S/10 – 2XL/18**

Lined Polyester Waistcoat ■ 100% Polyester, 185gsm, Colour: Black

PR622 Men's: Satin back with adjuster, Two functional watch pockets, Five button fastening ■ Sizes: **2XS/30" – 2XL/52"**

PR623 Women's: Satin back with adjuster, Two functional watch pockets, Four button fastening ■ Sizes: **2XS/6 – 2XL/18**



HERRINGBONE WAISTCOAT

Herringbone Waistcoat ■ Satin lining to the underside and reverse, Lapel collar, Adjusting buckle on the back ■ 50% Wool, 45% Polyester, 5% mixed fibres, 300gsm, 3 colours.

PR625 Men's sizes: **XS/32" – 2XL/52"**

PR626 Women's sizes: **XS/8 – 2XL/18**

■ Brown Check

■ Charcoal

■ Navy



TIES AND SCARVES



PR750 'Colours Collection' Satin Tie ■ Blade width 3.34"/8.5cm, Length 57"/144cm ■ 100% Polyester ■ 40°C wash ■ 38 colours

PR740 'Colours Collection' Chiffon Scarf ■ Lightweight chiffon, Width 6.5"/16.5cm, Length 38.5"/98cm ■ 100% Polyester ■ Handwash ■ 38 colours

PR755 'Colours Collection' Clip-on Satin Tie ■ Clip-on tie, Steel clip attachment, Blade width 3.34"/8.5cm ■ 100% Polyester ■ Handwash ■ 28 colours*



38

Colours

MIX AND MATCH IN COLOUR



18

Colours

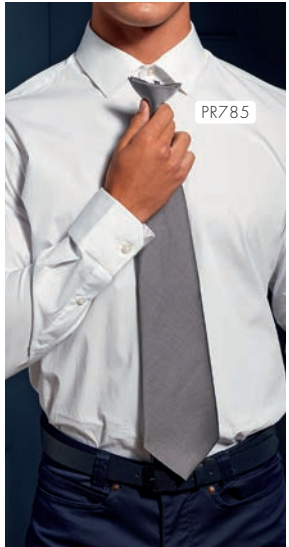
PR730

PR765

PR730 'Colours Originals'
Plain Business Scarf ■ Width 10"/25cm, Length 55"/140cm, ■ 100% Polyester ■ Handwash ■ 18 colours

PR765 'Colours Originals'
Fashion Tie ■ Matt appearance, Blade width 4"/10cm, Length 57"/144cm ■ 100% Polyester ■ 40°C wash ■ 18 colours

PR785 'Colours Originals' Clip-on
Fashion Tie ■ Clip-on tie, Steel clip attachment, Blade width 4"/10cm, Length 18"/47cm ■ 100% Polyester ■ Handwash ■ 18 colours



PR785



PR787 Puppy Tooth



PR780 Micro Waffle



PR783 Waffle Stripe



PR786 Club Stripe



PR788 Squares



PR781 Micro Dot



PR780 PR781 PR783 PR786 PR787 PR788 Patterned Ties ■ Blade width 3"/7.5cm, Length 57"/144cm ■ 100% Polyester ■ Handwash

TIES AND BOW TIES



PR782 Double Stripe

Blade width 3"/7.5cm, Length 57"/144cm ■ 100% Polyester ■ Handwash



PR784 Sports Stripe

Blade width 3"/7.5cm, Length 57"/144cm ■ 100% Polyester ■ Handwash



PR760 Multi-Stripe Tie

Blade width 4"/10cm, Length 57"/144cm ■ 100% Polyester ■ 40°C wash



PR705 Bow Tie

■ Satin weave bow tie, Hook and bar fastening
■ 100% Polyester ■ Wipe clean
■ Colour: Black



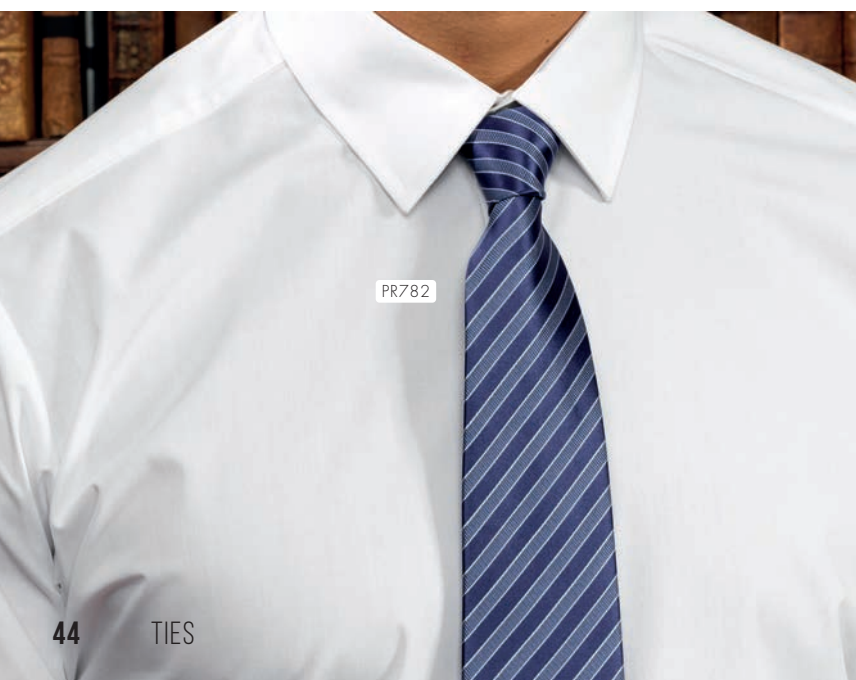
SKINNY TIES



PR789 Slim Knitted Tie ■ Blade width 2"/5cm, Length 58"/147cm ■ 100% Polyester ■ Handwash



PR793 Slim Tie ■ Satin weave, Blade width 2"/5cm, Length 58"/147cm ■ 100% Polyester ■ Wipe clean only



PERFORMANCE 'CHINO' JEANS

Performance 'Chino' Jeans ■ Front and back pockets, Rivet detail, Zip fly with metal button fastening on waistband, Stretch fabric ■ Regular leg 31"/79cm, Long leg 34"/86cm ■ 63% Polyester, 35% Cotton, 2% Elastane, 260gsm, 4 colours.

PR560 Men's sizes: XS/30" – 4XL/44" ■ **PR570** Women's sizes: XS/8 – 5XL/24



CLIP-ON TROUSER BRACES

PR701 Clip-on Trousers Braces ■ Elastic 'Y' back strap braces, Three non-slip clip buckles for attachment, Fully adjustable with lock buckles ■ 60% Polyester, 40% Rubber ■ 5 colours



TROUSERS

FIT FOR BUSINESS



PR520 Men's Business Trousers ■ Single pleated front, YKK zip fly with button, hook and bar fastening, Rear jetted pocket ■ 100% Polyester, 185gsm ■ Sizes: **30"/76cm – 44"/110cm**, Regular leg 31"/79 cm, Long leg 34"/86 cm ■ Colour: Black

PR530 Women's Business Trousers ■ Single pleated front, YKK zip fly with button, hook and bar fastening, Boot cut style ■ 100% Polyester, 185gsm ■ Sizes: **XS/8 – 5XL/24**, Regular leg 31"/79 cm, Long leg 34"/86 cm ■ Colour: Black

PR536 Women's Straight Leg Trousers ■ Trouser with a deep waistband, YKK fastening zip, Cross-over waistband with two button fastening ■ 100% Polyester, 185gsm ■ Sizes: **XS/8 – 5XL/24**, Regular leg 31"/79 cm ■ *Long leg 34"/86 cm ■ 3 colours



STRAIGHT CUT

PR520



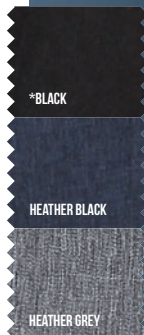
STRAIGHT CUT

PR536



BOOT CUT

PR530



KNITWEAR

HIS & HERS SWEATERS AND CARDIGANS



COTTON RICH KNITWEAR

PR694 Men's V-neck Knitted Sweater

▪ Cotton-rich long sleeve sweater, V-neck styling, Ribbed knit cuffs and hem ▪ 55% Cotton, 45% Acrylic, 12 gauge knit ▪ Sizes: **2XS/28" – 4XL/58"** ▪ 8 colours

PR697 Women's V-neck Knitted Cardigan

▪ Cotton-rich long sleeve cardigan, Seven button fastening, Ribbed knit cuffs and hem ▪ 55% Cotton, 45% Acrylic, 12 gauge knit ▪ Sizes: **XS/8 – 5XL/24** ▪ 8 colours



8

Colours





PR699

PR698

PR699 Men's Sleeveless Sweater ■ V-neck styling, Ribbed knit arm cuffs, neckline and hem, Cotton Rich ■ 55% Cotton, 45% Acrylic, 12 gauge knit ■ Sizes: **XS/30" – 4XL/58"** ■ 3 colours

PR698 Women's Long-Length Knitted Cardigan ■ V-neck styling, Seven button fastening, Two front patch pockets ■ 55% Cotton, 45% Acrylic, 12 gauge knit ■ Sizes: **XS/8 – 5XL/24** ■ 3 colours

PR695 Men's Quarter-Zip Knitted Sweater ■ Cotton Rich, Quarter zipped, Ribbed knit collar, cuff and hem ■ 55% Cotton, 45% Acrylic, 12 gauge knit ■ Sizes: **XS/30" – 4XL/58"** ■ 3 colours

PR696 Women's V-Neck Knitted Sweater ■ V-neck styling, Fine gauge knit, Cotton Rich, Ribbed knit cuffs and hem ■ 55% Cotton, 45% Acrylic, 12 gauge knit ■ Sizes: **XS/8 – 5XL/24** ■ 3 colours



PR695

PR696



BLACK

NAVY

CHARCOAL

PR692 Men's Crew-Neck Cotton Rich Knitted Sweater ■ Fine knit, Crew-neck styling, Ribbed knit neck, hem and cuffs ■ 55% Cotton, 45% Acrylic, 12 gauge knit ■ Sizes: **2XS/28" – 4XL/58"** ■ 3 colours

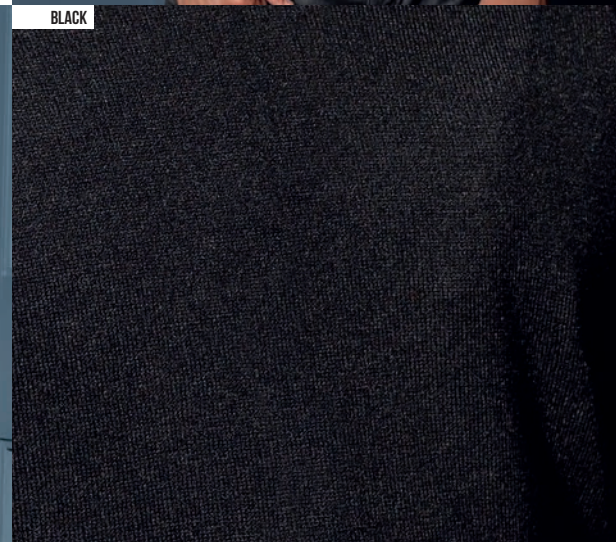


‘ESSENTIAL’ ACRYLICS

**EASY
CARE**

PR400 ‘Essential’ Acrylic Men’s V-neck Sweater ■ Ribbed knit neck, hem and cuffs, Contemporary V-neck styling, Fine knit ■ 100% Acrylic, 12 gauge knit ■ Sizes: **XS/30” – 5XL/62”** ■ 2 colours

PR402 ‘Essential’ Acrylic Women’s V-neck Cardigan ■ Ribbed knit neck, hem and cuffs, Contemporary V-neck styling, Fine knit ■ 100% Acrylic, 12 gauge knit ■ Sizes: **XS/8 – 2XL/18** ■ 2 colours



40°



PR218

‘LONG-JOHN’ ROLL-SLEEVE TEE

‘Long-John’ Roll-Sleeve Tee ■ Roll-sleeve with button and tab fastening on the upper arm, Round neck with three button placket, Ribbed bound neck and cuffs ■ 82% Polyester, 14% Viscose, 4% Elastane, 190gsm, 5 colours.

PR218 Men’s sizes: **XS/30” – 3XL/54”** ■ **PR318** Women’s sizes: **XS/8 – 2XL/18**

**MODERN
FIT**

40°

'COMIS' SUSTAINABLE TEE

'Comis' Sustainable Tee ■ Narrow banded collar with single button placket, Soft feel, Responsibly sourced cotton ■ 60% Sustainable Cotton, 40% Recycled Polyester, 160gsm. **Grey Marl:** 90% Sustainable Cotton, 10% Viscose, 160gsm, 5 colours

PR219 Men's sizes: S/34" – 3XL/54"

PR319 Women's sizes: XS/8 – 2XL/18



Recycled polyester - for stability and sustainability.



*Grey Marl does not contain recycled polyester



NEW

PR319

PR219

MADE WITH RESPONSIBLY SOURCED COTTON AND RECYCLED POLYESTER

NEW

PR631

PR633

SPUN DYEING IS KINDER TO
THE ENVIRONMENT

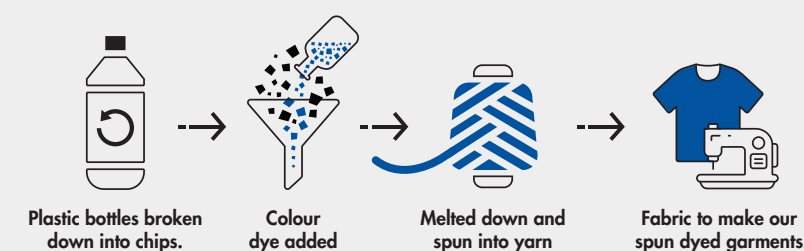
SPUN DYED SUSTAINABLE POLO SHIRT



Spun Dyed Sustainable Polo Shirt ■ Made with spun dyed recycled polyester yarn, Ribbed collar, Three button placket ■ 100% Recycled Polyester, 160gsm, 3 colours.

PR631 Men's sizes: S/35" – 4XL/53"

PR633 Women's sizes: XS/8 – 2XL/18





COOL[®]
CHECKER

COOLCHECKER[®] POLO SHIRTS

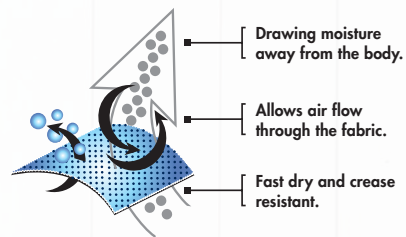
Coolchecker[®] Pique Polo Shirt ■ Side panels for fitted shape, Moisture management wicking fabric, Three button placket, Ribbed knit collar and cuffs ■ 100% Polyester pique knit, 155gsm, 25 colours

PR615 Men's sizes: S/35" – *5XL/51"

PR616 Women's sizes: XS/8 – 2XL/18

*only available in selected colours

COOLCHECKER[®] FABRIC TECHNOLOGY



MODERN
FIT



25

Colours



11

Colours



CONTRAST POLO SHIRTS

Contrast Tipped Coolchecker® Polo Shirt ▪ Contrast trim on collar, placket and sleeves, Side panels for fitted shape, Ribbed knit collar and sleeve, Three button placket
▪ 100% Polyester pique knit, 155gsm, 11 colours.

PR618 Men's sizes: S/35" – 4XL/48"

PR619 Women's sizes: XS/8 – 2XL/18

MODERN
FIT

40°



▪ Contrast trim on collar ▪ Ribbed collar and cuff



PREMIER
UNIFORMS THAT WORK FOR YOU



RED/BLACK

BLACK/RED

BLACK/ORANGE

BLACK/SUNFLOWER

BLACK/LIME

NAVY/WHITE

BLACK/PURPLE

BLACK/TURQUOISE

ROYAL/WHITE

BLACK/WHITE

DARK GREY/SILVER



PERFORMANCE POLO SHIRTS

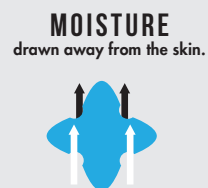
Coolchecker® Plus Pique Polo - Coolplus® ■ Double pique knit for heavier construction, Coolplus® wicking yarn for breathability, Ribbed knit collar and cuffs, Three button placket, Snag and crease resistant, Silvadur™ technology for antimicrobial properties ■ 100% Coolplus® Polyester Pique, 185gsm, 16 colours.

PR630 Men's sizes: S/35" - *6XL/59" **PR632** Women's sizes: XS/8 - **4XL/22

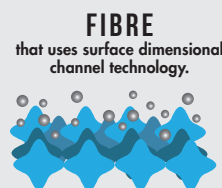
*and **only available in selected colours



AIR
flows through the fabric.



MOISTURE
drawn away from the skin.



FIBRE
that uses surface dimensional
channel technology.

**SILVADUR™
ANTIMICROBIAL**
which releases silver ions that
destroy the bacteria that
causes odour, material
degradation and discolouration.

16

Colours



POLO SHIRTS

PR610 Studded Polo ■ Three pop stud placket, Extra body length, Durable pique knit ■ 65% Polyester, 35% Cotton, 200gsm ■ Sizes: **S/34" – 3XL/52"** ■ 50°C wash ■ 4 colours

PR617 Long Sleeve Coolchecker Pique Polo ■ Ribbed knit collar and cuffs, Moisture management wicking fabric, Three button placket ■ 100% Polyester Pique, 155gsm ■ Sizes: **XS/33" – 4XL/48"** ■ 40°C wash ■ 2 colours



COOL
CHECKER



50°

40°



60°

COOL
CHECKER®

DRAWING MOISTURE AWAY FROM THE BODY.
ALLOWS AIR FLOW THROUGH THE FABRIC.
FAST DRY AND CREASE RESISTANT.

SNAP BUTTON FASTENING

PR612 Coolchecker® Studded Polo ■ Two pop stud fastening on the placket, Wicking properties, Self-fabric collar ■ 100% Polyester pique, 140gsm ■ Sizes: **XS/33" – 3XL/50"** ■ 6 colours

UNISEX SHORT & LONG SLEEVE POLO SHIRTS

POWERED BY, HEIQ VIROBLOCK*

PR995 Unisex Short Sleeve Polo Shirt ▪ Powered by HeiQ Viroblock, an antimicrobial textile technology designed to kill microbes, germs and bacteria on the fabric surface, Ribbed knit collar and sleeve cuff, Two button placket, Extra body length
▪ 65% Polyester, 35% Cotton, powered by HeiQ Viroblock, 200gsm ▪ Sizes: **S/35"** – **4XL/53"** ▪ 5 colours

PR997 Unisex Long Sleeve Polo Shirt ▪ Powered by HeiQ Viroblock, an antimicrobial textile technology designed to kill microbes, germs and bacteria on the fabric surface, Ribbed knit collar and sleeve cuff, Two button placket, Extra body length
▪ 65% Polyester, 35% Cotton, powered by HeiQ Viroblock, 200gsm ▪ Sizes: **S/35"** – **4XL/53"** ▪ 2 colours

*Please read disclaimer on page 145



PR997



PR995



NEW

PR803

PR804

PREMIER
UNIFORMS THAT WORK FOR YOU

'ARTISAN' FLEECE GILET

'Artisan' Fleece Gilet ■ Contrast trim detail, Zip through style with two-way zipper, External zipped side pockets, Front and back panels ■ 100% Polyester, 260gsm, 4 colours.

PR803 Men's sizes: S/34" – 3XL/54"

PR804 Women's sizes: XS/8 – 3XL/20



■ Contrast trim detail

■ Two way zipper



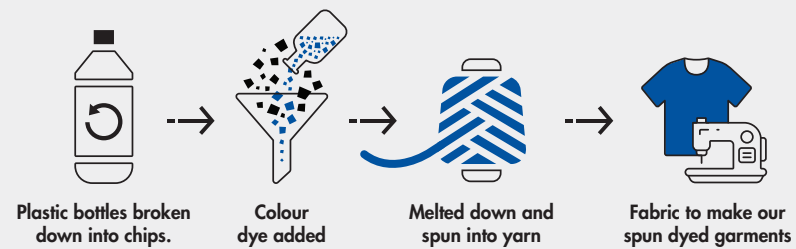
SPUN DYED SUSTAINABLE ZIP-THROUGH SWEAT



Spun Dyed Sustainable Zip-Through Sweat ■ Made with spun dyed recycled polyester yarn, Contrast zip detail, Two external zipped pockets, High neck cadet collar ■ 100% Recycled Polyester, 280gsm, 3 colours.

PR808 Men's sizes: S/35" – 4XL/53"

PR809 Women's sizes: XS/8 – 2XL/18



NEW

PR808

PR809

100% RECYCLED POLYESTER

WASHABLE FACE COVERING

PR799 Washable Face Covering ■ Washable and reusable, two layers of single jersey fabric with inner loop option for fit adjustment, Silvadur™ 930 Antimicrobial finish on inner layer, Zelan™ R3 / Teflon EcoElite™ water repellent finish on outer layer ■ L 32cm x W 12cm ■ 95% Cotton, 5% Elastane, 160gsm ■ 15 colours



3 LAYER FACE MASK

POWERED BY, HEIQ VIROBLOCK*

PR994 3 Layer Face Mask ■ HeiQ Viroblock antimicrobial textile technology applied to the inner layer; designed to kill microbes, germs and bacteria on the fabric surface, Three layers with a middle filtering layer with pocket for inserting optional PR797 carbon filter, Elasticated ear loops and drawcord to fit securely in place, Teflon™ water repellent outer layer to repel droplets landing on the mask surface ■ Outer layer: 65% Polyester, 35% Cotton, Mid layer: 100% Polyester non-woven, Inner layer: 100% Cotton jersey, powered by HeiQ Viroblock ■ 5 colours



Powered by HeiQ Viroblock, a world-leading innovative Swiss textile technology.

3 LAYER FABRIC MASK

PR796 3 Layer Fabric Mask ■ Three layer fabric mask with a middle filtering layer, High air permeability for ease of breathing, Elasticated ear loops with adjustable drawstring cord to fit securely in place, Bendy nose wire to prevent glasses steaming up, Optional pocket for carbon filter (PR797 sold separately), Snug fit over nose and chin, Comes in a resealable retail friendly bag ■ Outer layer: 100% Woven cotton, Mid layer: Filtering non-woven polyester, Inner layer: Soft feel 100% woven cotton ■ 12 colours



PM2.5 ACTIVATED CARBON MASK FILTER

PR797 PM2.5 Activated Carbon Mask Filter ■ Optional filter for PR796 for additional defence, Spunbond cloth filters micron-level dust, PM2.5 (Partical matter 2.5 microns), Conforms to standards GB2626-2006, Reduces inhalation of particles such as haze, dust, pollen and motor vehicle exhaust emissions.



APRONS

SERVE UP SUSTAINABILITY

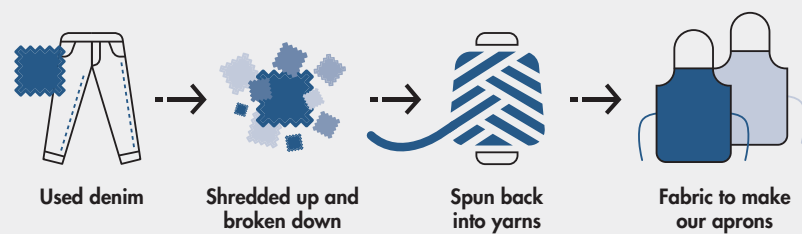
For an eco-friendly approach to service, choose an apron that has been sourced and manufactured in a more sustainable way. Impress customers with great looking aprons that have an important sustainable story to tell.



'REGENERATE' SUSTAINABLE BIB APRON



PR122 'Regenerate' Sustainable Bib Apron ■ Slanted side pockets with contrast trim, Adjustable knotted neckband, Contrast stitching, Recycled cotton from used denim, **Black Denim:** 53% Recycled Cotton, 41% Recycled Polyester, 6% Recycled Viscose, **Indigo Denim:** 58% Recycled Cotton, 36% Recycled Polyester, 6% Recycled Viscose, **Grey Denim:** 55% Recycled Cotton, 36% Recycled Polyester, 9% Recycled Viscose, **Natural:** 44% Recycled Cotton, 37% Recycled Polyester, 19% Recycled Viscose, 275gsm ■ 4 colours



NEW



PR122

RECYCLED COTTON
FROM USED DENIM



‘BARLEY’ CONTRAST STITCH BIB APRON

PR121 ‘Barley’ Contrast Stitch Sustainable Bib Apron ■ Eyelet and rivet detail, Adjustable antique brass buckle on neckband, Side pockets and centre zippered pocket, Contrast stitching ■ 65% Recycled Polyester, 35% Sustainable Cotton, 195gsm ■ 4 colours



■ Contrast stitching





COTTON APRONS - ORGANIC & FAIRTRADE CERTIFIED

PR112 Cotton Bib Apron, Organic & Fairtrade Certified ■ Sliding adjustable buckle on neckband, Centre pocket, Width 60cm, Length 84cm ■ 100% Cotton - Fairtrade Certified, 200gsm ■ Colour: Black

PR114 Cotton Waist Apron, Organic & Fairtrade Certified ■ 90cm self-fabric ties, Width 70cm, Length 50cm ■ 100% Cotton - Fairtrade Certified, 200gsm ■ Colour: Black



RECYCLED POLYESTER & ORGANIC COTTON APRON

PR120 Recycled Polyester and Cotton Bib Apron, Organic & Fairtrade Certified ■ Two slanted side pockets measuring 24cm depth by 18cm wide, Adjustable buckle on neckband, Care label printed on the underside that highlights the eco-friendly properties of this style ■ 65% Recycled Polyester, 35% Cotton, Organic & Fairtrade Certified, 280gsm ■ 5 colours





40°

DENIM COTTON BIB APRON - ORGANIC & FAIRTRADE CERTIFIED

PR113 Denim Cotton Bib Apron - Organic & Fairtrade Certified ■ Two mitred pockets measuring 20cm deep x 19.5cm wide, Antique brass/gunmetal buckle on neckband for height adjustment, 80cm long x 72cm wide with 107cm long ties, Care label printed on the underside that highlights the eco-friendly properties of this style ■ 100% Cotton, Organic & Fairtrade Certified, 235gsm ■ 3 colours



20
Colours



100% COTTON APRON - ORGANIC CERTIFIED

PR102 100% Organic Cotton Bib Apron ■ Self-fabric ties, Self-fabric neckband, Width 60cm, Length 87cm ■ 100% Cotton - Organic Certified, 240gsm ■ 20 colours



85°



WAXED-LOOK COTTON APRONS

- PR134 'District' Waxed-Look Bib Apron**
 - Durable waxed look finish, Oversized jean style pocket with stitch and rivet detail, Contrast colour ties secured in place with metal eyelets, Fabric features including, patch pocket and cloth holder
 - 100% Cotton Denim with Acrylic 'Waxed Look' Coating, 350gsm
 - 2 colours

PR135 'Division' Waxed-Look Waist Apron
 - Durable waxed look finish giving a water repellent surface, Contrast fabric features for function and decoration, Oversized jean style pocket with stitch rivet detail, Contrast colour ties secured in place with metal eyelets
 - 100% Cotton Denim with Acrylic 'Waxed Look' coating, 350gsm
 - 4 colours

PR136 'Division' Waxed-Look Bib Apron with Faux Leather
 - Durable waxed look finish giving a water repellent surface, Contrast fabric features for function and decoration, Faux leather ties and neckband with adjustable buckle, Tinted denim effect created by contrast coloured yarns
 - 100% Cotton Denim with Acrylic 'Waxed Look' coating, 350gsm
 - 4 colours



JEAN STITCH DENIM APRONS

PR126 Jean Stitch Denim Bib Apron ■ Four 'kangaroo' style pockets with rivet detail, Adjustable buckle on neck band, Width 72cm, length 86cm ■ 70% Cotton, 30% Polyester, 265gsm ■ 2 colours



PR125 Jean Stitch Denim Waist Apron ■ Four 'kangaroo' style pockets with rivet detail, Contrast stitch detail, Length 39.5cm ■ 70% Cotton, 30% Polyester, 265gsm ■ 2 colours



■ Buckle on neckband



■ Contrast stitching on Indigo Denim



PREMIER
UNIFORMS THAT WORK FOR YOU





'METRO' HIP APRON

PR138 'Metro' Utility Hip Apron ■ Tablet-friendly jeans style riveted pocket, Zip-fastening pocket, Adjustable self-fabric waistband with carabiner fastener ■ 100% Cotton Canvas, 320gsm. Denim: 70% Cotton, 30% Polyester, 265gsm ■ 4 colours



85°

FAUX LEATHER APRON

PR139 Faux Leather Bib Apron ■ Buckle fastening neckband, Durable faux leather, Large open patch pocket, Contrast stitching on Navy ■ Outer 100% Polyurethane, Inner 85% Polyester, 8% Viscose, 7% Cotton, 360gsm ■ 4 colours



30°



FAUX LEATHER

PR139

CONTRAST DENIM

PR127 'Domain' Contrast Denim Bib Apron ■ Neckband with buckle fastening for height adjustment, Centre pocket with contrast trim, including pen compartment, Metal eyelets secure 100cm contrast fabric ties ■ 70% Cotton, 30% Polyester, 265gsm ■ 2 colours



OEKO-TEX®
CONFIRMED BY TESTED
STANDARD 100
11-057/31 SHIRLEY

85°

COTTON RICH

■ Contrast pocket with rivet detail

■ Adjustable buckle



PR128

PR127



BLACK DENIM

INDIGO DENIM



PR144

'ANNEX' OXFORD BIB APRONS

PR144 'Annex' Oxford Bib Apron ■ Faux leather neckband with buckle and rivet detail, Faux leather cloth holder and side tabs with rivet detail, Centre pocket, Double D-ring fastening to the waist ■ 100% Cotton Yarn Dyed Oxford Weave, 220gsm ■ 4 colours



'ESPRESSO' BIB APRON



PR123 'Espresso' Bib Apron ■ Faux leather trim and neckband, Press stud buttons on neckband for height adjustment, Two handy pleat pockets measuring 13cm ■ 65% Polyester, 35% Cotton with faux leather trim, 195gsm ■ 4 colours



■ Faux leather trim



■ Two handy pleat pockets



OEKO-TEX®
CONFIDENCE IN TEXTILES
STANDARD 100
11-55731 SHIRLEY

85°

BLACK FAUX LEATHER

BLACK REVERSE DENIM

BROWN STRIPE

BROWN FAUX LEATHER

NAVY STRIPE

INDIGO REVERSE DENIM



CROSS-BACK 'BARISTA' BIB APRON

PR129 Cross-Back 'Barista' Bib Apron ■ Supplied with self-fabric straps, Alternative interchangeable straps available (PR119), Front centre pocket with built-in pen slot ■ Canvas: 100% Cotton, 320gsm. Denims: 70% Cotton, 30% Polyester, 265gsm ■ 8 colours

Choose alternative Apron straps for an individual look

PR119 Cross-Back Interchangeable Apron Straps ■ Alternative straps for PR129 Cross Back 'Barista' Bib Apron, Fixed with a buckle fastener to hook on to the main body of the apron, Measuring 170cm x 3cm ■ Striped: 100% Polyester. Denim: 70% Cotton, 30% Polyester. Faux Leather: 100% Polyurethane ■ Colour: 6 as listed



'CALIBRE' COTTON CANVAS APRONS

PR130 'Calibre' Heavy Cotton Canvas Bib Apron ▪ Full bib Apron measuring 86cm long by 72cm wide, Heavyweight and durable, Oversized eyelet for knotted neckband ▪ 100% Cotton Canvas, 320gsm ▪ 8 colours

PR131 'Calibre' Heavy Cotton Canvas Waist Apron ▪ Mid-length waist Apron measuring 50cm long by 70cm wide, Heavyweight and durable, Metal eyelets secure 90cm self fabric waist ties ▪ 100% Cotton Canvas, 320gsm ▪ 8 colours



PR137 'Calibre' Heavy Cotton Canvas Pocket Apron ▪ Four 'kangaroo' style stitched pockets, Oversized eyelet for knotted neckband, Heavyweight and durable ▪ 100% Cotton Canvas, 320gsm ▪ 8 colours



'CHINO' COTTON APRONS

PR132 'Chino' Bib Apron ■ Full bib Apron measuring 86cm long by 72cm wide, 'Chino' style stitched pockets with rivets, Neckband with buckle and adjustable snap button fastening ■ 100% Cotton, 235gsm ■ 4 colours

PR133 'Chino' Waist Apron ■ Short waist Apron measuring 60cm wide by 33cm long, 'Chino' style waistband and faux fly, Metal eyelets secure 90cm self fabric ties ■ 100% Cotton, 235gsm ■ 4 colours



■ 'Chino' style waistband with faux fly and metal button fastening

■ 'Chino' style pocket with rivets



DELVE INTO A WORLD OF COLOUR

The 'Colours Collection' provides an easy and cost effective way to reflect your branding with aprons in up to 62 colours.

A colour co-ordinated team works effortlessly and helps gives a sense of structure and order to a busy service. Pick one or two shades from our 'Colours Collection' and work this across your team. Have fun exploring colour and building your brand with the 'Colours Collection'.



NEW
COLOURS

'COLOURS COLLECTION' BIB APRON

PR150 'Colours Collection' Bib Apron ■
Adjustable buckle on neckband, Self-fabric ties,
Two sizes available ■ 65% Polyester, 35%
Cotton, 195gsm. Denim: 70% Cotton, 30%
Polyester, 265gsm ■ Size: 86cm x 72cm

*Extra large size: 102cm x 91cm
(Black and White only)



CORNFLOWER	ROYAL	MARINE BLUE
NAVY	INDIGO DENIM	BLUE DENIM
CYAN	LIGHT BLUE	PEACOCK
MID BLUE	SAPPHIRE	LILAC
LAVENDER	PURPLE	RICH VIOLET
AUBERGINE	FUCHSIA	MAGENTA
PINK	ROSE	HOT PINK
RASPBERRY CRUSH	BURGUNDY	RED
SALSA	STRAWBERRY RED	ORANGE
TERRACOTTA	CHESTNUT	BROWN
MOCHA	MUSHROOM	LATTE
KHAKI	NATURAL	CAMEL
MUSTARD	SUNFLOWER	YELLOW
LEMON	LIME	OASIS GREEN
OLIVE	MOSS GREEN	AQUA
DUCK EGG BLUE	TURQUOISE	TEAL
EMERALD	KELLY	PISTACHIO
APPLE	BOTTLE	SAGE
WHITE*	BLACK DENIM	GREY DENIM
SILVER	STEEL	CHARCOAL
DARK GREY	BLACK*	

42

Colours

NEW
COLOURS

PREMIER
UNIFORMS THAT WORK FOR YOU

NAVY	ROYAL	TURQUOISE	AQUA	BURGUNDY	RED
HOT PINK	FUCHSIA	PINK	BROWN	ORANGE	KHAKI
SUNFLOWER	NATURAL	PURPLE	BOTTLE	EMERALD	SAGE
OLIVE	LIME	BLACK			
DARK GREY	SILVER	WHITE			

36

Colours

PR151 'Colours Collection' Mid-Length Apron ■ Mid-length waist apron, 90cm self fabric ties, Width 70cm, length 50cm ■ 65% Polyester, 35% Cotton, 195gsm ■ 36 colours

PR154 'Colours Collection' Bib Apron with Pocket ■ Sliding adjustable buckle on neck band, Width 72cm, length 86cm, Tablet friendly centre pocket with combined pen slot ■ 65% Polyester, 35% Cotton, 195gsm ■ 42 colours

NAVY	ROYAL	MARINE BLUE	SAPPHIRE	TURQUOISE	*MID BLUE	*LIGHT BLUE	AQUA
BURGUNDY	RED	STRAWBERRY RED	HOT PINK	FUCHSIA	*ROSE	*LILAC	PINK
					NEW		
WHITE	BROWN	ORANGE	TERRACOTTA	CHESTNUT	MOCHA	KHAKI	*LEMON
NATURAL	AUBERGINE	PURPLE	RICH VIOLET	TEAL	EMERALD	*MOSS GREEN	OASIS GREEN
						NEW	
LIME	APPLE	BLACK	DARK GREY	BOTTLE	STEEL	SILVER	OLIVE
SAGE	SUNFLOWER						

*PR151 not available in these colours

POCKET WAIST APRONS

PR155 'Colours Collection' 3 Pocket Waist Apron ■ Three open pockets: 90cm self-fabric ties, Width 60cm, length 33cm ■ 65% Polyester, 35% Cotton, 195gsm ■ 24 colours

PR158 'Colours Collection' Bar Apron with Pocket ■ Tablet friendly centre pocket with combined pen slot, 90cm self-fabric ties, Width 80cm, length 90cm ■ 65% Polyester, 35% Cotton, 195gsm ■ 24 colours

OEKO-TEX®
CONFIDENCE IN TEXTILES
STANDARD 100
11-55731 SHIRLEY

CONTRAST APRONS

PR162 'Colours Collection' Contrast Bib Apron ■ Colour contrasting vertical panel, Sliding adjustable buckle on neckband, Two front slanted pockets ■ 65% Polyester, 35% Cotton, 195gsm ■ 7 colours



CHILDREN'S APRON

PR149 'Colours Collection' Children's Bib Apron ■ Safety release mechanism on neckband, Infant sizing: 43cm wide, 53cm long, Junior sizing: 48 wide, 63cm long ■ 65% Polyester, 35% Cotton, 195gsm ■ Sizes: Infant 3-6 years, Junior 7-10 years ■ 16 colours



16
Colours



ZIP POCKET WAIST APRON

PR105 Zip Pocket Waist Apron ■ Two zipped closed pockets, Centre open pocket, Width 60cm, length 33cm ■ 65% Polyester, 35% Cotton, 195gsm ■ Colour: Black



Two zipped pockets



OEKO-TEX®
CONFIDENCE IN TEXTILES
STANDARD 100
11-95731 SHIRLY



10

Colours

2 IN 1 APRON

PR159 'Colours Collection' 2-in-1 Apron ■ One apron worn two ways, Bib and waist apron styles, Pocket features on both styles ■ 65% Polyester, 35% Cotton, 195gsm ■ 10 colours



Can be worn as a bib apron, doubles over and neck ties are secured away to form a waist apron.



BIB APRON

POWERED BY, HEIQ VIROBLOCK*

PR996 Bib Apron ■ Powered by HeiQ Viroblock, an antimicrobial textile technology designed to kill microbes, germs and bacteria on the fabric surface, Buckle on the neckband for height adjustment, 86cm long x 72cm wide, Self fabric ties ■ 65% Polyester, 35% Cotton, powered by HeiQ Viroblock, 195gsm ■ 5 colours



Powered by HeiQ Viroblock, a world-leading innovative Swiss textile technology.



*Please read disclaimer on page 145

ECONOMY APRONS

PR165 'Essential' Bib Apron ■ Classic bib apron, Width 67cm, length 78cm, 75cm self-fabric ties ■ *Black: 80% Polyester, 20% Cotton. Colours: 65% Polyester, 35% Cotton, 170gsm ■ 6 colours



6 Colours



PR165



PR996



PR167

PR167 Polyester Bib Apron ■ Adjustable sliding buckle on neckband, Width 72cm, length 86cm, 90cm self-fabric ties ■ 100% Polyester, 195gsm ■ 4 colours



PR145 Children's Waterproof Apron ■ Safety release mechanism on neckband, Waterproof fabric, 50cm self-fabric ties ■ 100% Polyester with Polyurethane coating, 110gsm ■ Sizes: Infant 3-6 years, Junior 7-10 years ■ 8 colours



PR145

8

Colours



PR174

WATERPROOF WRAP AROUND TUNIC

PR174 Waterproof Wrap Around Tunic ■ Waterproof and bleach resistant, V-neck styling, Double centre pocket, Flattering feminine fit measuring 86cm in length ■ 100% Polyester with Polyurethane coating, 110gsm ■ Sizes: **S-M**/10-12, **L-XL**/14-16 ■ 4 colours



PR115

WATERPROOF APRONS

PR115 Waterproof Bib Apron ■ Adjustable buckle on neckband, Waterproof and bleach resistant fabric, 90cm self fabric ties ■ 100% Polyester with Polyurethane coating, 110gsm ■ 8 colours



'TULIP' WRAP AROUND TUNIC

PR177 'Tulip' Wrap-Around Tunic ■ Over-the-head style, V-neck styling, Centre patch pocket ■ 100% polyester, 185gsm ■ Sizes: **S-M**/10-12, **L-XL**/14-16 ■ 4 colours



FASTENING TIP

Bring the ties from back to front and tie round your waist on the underside, then take front ties and fasten at the back.

PR177



TABARDS

PR172 Long Length Pocket Tabard ■ Pull-on coverall with a length of 78cm, Side tabs with adjustable press stud fastening, Centre pocket ■ 65% Polyester, 35% Cotton, 195gsm ■ Sizes: **S/10 – XL/16** ■ 3 colours

PR171 Pocket Tabard ■ Pull-on coverall with a length of 68cm, Side tabs with adjustable press stud fastening, Centre pocket ■ 65% Polyester, 35% Cotton, 195gsm ■ Sizes: **S/10 – 3XL/20** ■ 18 colours

PREMIER
UNIFORMS THAT WORK FOR YOU



PR172



PR171



CHEFSWEAR

A MENU OF CHOICE

We are serving up a menu of choice and variety with our collection of chefswear.

Long and short sleeve jackets with various fastening options are complemented by a good offering of chef's trousers, aprons and accessories. From typical 'chef's whites' to artisan-inspired denim choices, we have professional uniforms suitable for those working in food preparation, service and catering.





PR906

ZIPPED CHEF'S JACKETS

PR906 Chef's Zip-Close Short Sleeve

Jacket ■ Zip through fastening, Double pen pocket on left sleeve, Colour contrast underarm, Mandarin collar ■ White: 65% Polyester, 35% Cotton, 170gsm, Denim: 60% Cotton, 40% Polyester, 230gsm ■ Sizes: **XS/30"** – **2XL/50"** ■ 3 colours



WHITE

INDIGO DENIM

BLACK DENIM



PR906

■ Zip through fastening

■ Loop for hanging

■ Underarm colour contrast on denims





PRESS-STUD JACKETS

PR664 Short Sleeve Studded Chef's Jacket ■ Mandarin collar, Ten press-stud fastening, Wrap over style
■ 65% Polyester, 35% Cotton, 195gsm ■ Sizes: **XS/30" – 3XL/54"** ■ 2 colours

PR665 Long Sleeve Studded Chef's Jacket ■ Mandarin collar, Ten press-stud fastening, Wrap over style
■ 65% Polyester, 35% Cotton, 195gsm ■ Sizes: **XS/30" – 3XL/54"** ■ 2 colours



PR664

PR665



DENIM CHEF'S JACKET

PR660 Denim Chef's Jacket ■ Cotton rich chef's jacket, Cross-over front fastening, Ten press-stud fastening
■ 60% Cotton, 40% Polyester, 230gsm
■ Sizes: **XS/30" – 3XL/54"** ■ 2 colours



PR660



'ESSENTIAL' CHEF'S JACKETS

PR900 'Essential' Short Sleeve Chef's Jacket ■ Five button wrap over fastening, Long life resin buttons, Mandarin collar ■ 65% Polyester, 35% Cotton, 170gsm ■ Sizes: **XS/30"** – **4XL/58"** ■ 2 colours



PR900

■ Double pen pocket



■ Long life resin buttons



OEKO-TEX®
CONFIDENCE IN TEXTILES
STANDARD 100
11-55/31 SHIRLEY

BLACK



WHITE



BLACK



WHITE



PR901

PR901 'Essential' Long Sleeve Chef's Jacket ■ Five button wrap over fastening, Long life resin buttons, Double pen pocket on left sleeve, Mandarin collar ■ 65% Polyester, 35% Cotton, 170gsm ■ Sizes: **XS/30"** – **4XL/58"** ■ 2 colours

EASY
CARE

85°

CLASSIC CHEF'S JACKETS

PR656 Short Sleeve Chef's Jacket ■ Ten button hole wrap over fastening, Double pen pocket on left sleeve, Mandarin collar
■ 65% Polyester, 35% Cotton, 195gsm ■
Sizes: **XS/30" – 4XL/58"** ■ 3 colours

PR657 Long Sleeve Chef's Jacket ■ Ten button hole wrap over fastening, Mandarin collar
■ 65% Polyester, 35% Cotton, 195gsm ■
Sizes: **XS/30" – 4XL/58"** ■ 3 colours



BLACK



BLACK



STEEL



STEEL



WHITE



WHITE

PR656





COOLCHECKER® CHEF'S JACKETS

PR902 Coolchecker® Short Sleeve Chef's Jacket

Coolchecker® fabric mesh back panel, Double pen pocket on left sleeve, Self-fabric ten button fastening
 ■ 65% Polyester, 35% Cotton, 170gsm ■ Sizes: XS/30" – 2XL/50" ■ 2 colours

PR903 Coolchecker® Long Sleeve Chef's Jacket

Coolchecker® fabric mesh back panel, Double pen pocket on left sleeve, Self-fabric ten button fastening
 ■ 65% Polyester, 35% Cotton, 170gsm ■ Sizes: XS/30" – 2XL/50" ■ 2 colours



Coolchecker® fabric mesh back panel and loop for hanging



WHITE

BLACK



WHITE

BLACK

Coolchecker® fabric mesh back panel





PR670

PR671

- Ten button hole wrap over fastening
- Double pen pocket on left sleeve

WOMEN'S STYLES

PR670 Women's Short Sleeve Chef's Jacket ▪ Ten button hole wrap over fastening, Double pen pocket on left sleeve, Back panels for a more fitted style ▪ 65% Polyester, 35% Cotton, 195gsm ▪ Sizes: XS/8 – 2XL/18 ▪ 1 colour

PR671 Women's Long Sleeve Chef's Jacket ▪ Ten button hole wrap over fastening, Double pen pocket on left sleeve, Back panels for a more fitted style ▪ 65% Polyester, 35% Cotton, 195gsm ▪ Sizes: XS/8 – 2XL/18 ▪ 1 colour



WHITE



EASY
CARE



LONG SLEEVE 'CUISINE' CHEF'S JACKET

PR661 Long Sleeve 'Cuisine' Chef's Jacket ▪ Mandarin collar, Comes with Black removable studs (other colours available, see page 129), Ten hole wrap fastening ▪ 65% Polyester, 35% Cotton, 195gsm ▪ Sizes: XS/30" – 4XL/58" ▪ 2 colours



EASY
CARE



PR661

CHEF'S T-SHIRT

PR649 Chef's Coolchecker® T-Shirt ▪ Crew neck styling, Coolchecker® fabric back panel, Underarm vent holes, Double pen pocket on left sleeve ▪ 100% Polyester, 135gsm ▪ Sizes: XS/30" – 3XL/54" ▪ 2 colours



WHITE

BLACK



MODERN
FIT



PR649

- Underarm vent holes

COOL®
CHECKER

CHEF'S ACCESSORIES



PR653 Chef's Skull Cap

▪ Flat top, Elasticated fit, One size fits all ▪ 65% Polyester, 35% Cotton, 195gsm. Denim: 60% Cotton, 40% Polyester, 230gsm ▪ 9 colours



BLACK



NAVY



BOTTLE



WHITE



RED



BLACK/WHITE CHECK



†INDIGO DENIM



†BLACK DENIM



†GREY DENIM



PR648 Turn Up Chef's Hat ▪ Turn up double edge band, Five eyelets for ventilation, Four sizes available ▪ 65% Polyester, 35% Cotton, 195gsm ▪ Sizes: S 54cm, M 57cm, L 60cm, XL 63cm ▪ 2 colours



WHITE



BLACK

PR658 Chef's Zandana ▪ Two ties at the back, Elasticated fit, Neck flap ▪ 65% Polyester, 35% Cotton, 195gsm ▪ 2 colours



BLACK



WHITE



PR658

PR110 Striped Bib Apron

▪ Butcher's style apron, 90cm self-fabric ties and neck band, Width 72cm, length 101cm ▪ 100% Cotton, 240gsm. Black/Grey: 65% Polyester, 35% Cotton, 195gsm ▪ 3 colours



†BLACK/WHITE

BLACK/GREY

†NAVY/WHITE



PR110



PR652

PR652 Chef's Jacket Studs ▪ Removable studs, For use with PR661 Cuisine Chef's Jacket (pg 127), Sold in bags of 12 ▪ Durable plastic, Wipe clean ▪ 3 colours



BLACK



NAVY



WHITE

CHEF'S TROUSERS



BLACK & WHITE CHECK



*BLACK



BLACK



NAVY & WHITE CHECK



BLACK & WHITE CHECK

PR554 Chef's 'Select' Slim Leg Trousers ■ Fitted style on lower leg, Patch pocket on right leg, Elasticated waist with draw cord and zip fly fastening ■ 65% Polyester, 35% Cotton, 195gsm ■ Sizes: **XS/28"** – **2XL/44"** ■ 1 colour



PR552 Pull-On Chef's Trousers ■ Elasticated waist, Zip fly, 30.5"/77cm inside leg ■ 65% Polyester, 35% Cotton, 195gsm ■ Sizes: **XS/28"** – **2XL/44"** ■ 2 colours

PR553 'Essential' Chef's Trousers ■ Elasticated waist, Swing pockets, 30.5"/77cm inside leg ■ 65% Polyester, 35% Cotton, 195gsm ■ Sizes: **XS/28"** – ***4XL/48"** ■ 2 colours

*only available in Black



PR556

BLACK DENIM



PR555

BLACK



BLACK DENIM

INDIGO DENIM

PR556 Chef's 'Artisan' Jogger Bottoms ■ Cuffed ankle, Elasticated waistband, draw cord and belt loops, Soft and stretchy fabric ■ 87% Cotton, 12% Polyester, 1% Elastane, 230gsm ■ Sizes: **XS/28"** – **2XL/44"** ■ 2 colours



■ Two cargo pockets



PR555 'Essential' Chef's Cargo Pocket Trousers ■ Two mobile friendly cargo pockets, Elasticated waistband, Draw cord ■ 65% Polyester, 35% Cotton, 195gsm ■ Sizes: **XS/28"** – **3XL/46"** ■ 1 colour



BEAUTY, SPA & SALONWEAR

YOUR UNIFORM MAKEOVER

The aesthetics industry covers everything from hairdressing and beauty treatments to the more advanced clinical therapies. Clients need to feel assured of a professional service performed by individuals who - in-turn, look after their own aesthetical appearance. As a business, you can help your staff present themselves better by providing them with a uniform that looks professional and works on practical level.





PR536

STRAIGHT
FIT



PR688

Iris

PR536 Women's Straight Leg Trousers ■ Trouser with a deep waistband, YKK fastening zip, Cross over waistband with two button fastening ■ 100% Polyester, 185gsm ■ Sizes: **XS/8 – 5XL/24**, Regular leg 31"/79 cm, *Long leg 34"/86 cm ■ 3 colours



Viola

PR688 Linen-Look V-Cut Beauty Tunic ■ Open pockets to the sides, Round neck with v-cut, Concealed zip back ■ 100% Polyester, 160gsm ■ Sizes: **XS/8 – 5XL/24** ■ 2 colours



PR685

Verbena

PR685 Linen-Look Button-Up Beauty Tunic ■ Banded style collar, Buttoned placket, Three quarter sleeves ■ 100% Polyester, 160gsm ■ Sizes: **XS/8 – 5XL/24** ■ 2 colours



LINEN-LOOK FABRIC



PR690



PR691



PR683



Blossom

PR683 Asymmetric Button Tunic ■
 Flattering feminine fit with bust and back darts, Mandarin collar, Concealed zip through fastening and press stud ■ 100% Polyester, 185gsm ■ Sizes: **2XS/6 – 5XL/24** ■ 7 colours



Rose

PR690 Wrap Satin Trim Tunic ■
 Flattering feminine fit with bust and back darts, Satin trim creating the illusion of a wrap tunic, Pull-on style with back zip fastening ■ 100% Polyester, 185gsm ■ Sizes: **2XS/6 – 5XL/24** ■ 1 colour



EASY CARE

40°

Ivy

PR691 Contrast Neck Tunic ■
 Flattering feminine fit with bust and back darts, Crossover neckline with contrast coloured trim, Pull-on style with back zip fastening ■ 100% Polyester, 185gsm ■ Sizes: **2XS/6 – 5XL/24** ■ 4 colours



EASY CARE

12

Colours

Orchid

PR682 Beauty & Spa Tunic ■ Flattering feminine fit with bust and back darts, Mandarin collar, Eight 'bar' button fastening ■ 100% Polyester, 185gsm ■ Sizes: **2XS/6 – 5XL/24** ■ 12 colours

PR682



PR686



PR681

Camellia

PR686 Feature Zip Tunic

- Flattering feminine fit with bust and back darts, Cross over neckline, Pull-on style with front feature zip ■ 100% Polyester, 185gsm ■ Sizes: **2XS/6 – 5XL/24** ■ 1 colour

BLACK & BLACK



Mika

PR681 Feature Button Tunic

- Flattering feminine fit with bust and back darts, Four sparkly feature buttons embellished on the trim, Pull-on style with back zip fastening ■ 100% Polyester, 185gsm ■ Sizes: **2XS/6 – 5XL/24** ■ 1 colour

BLACK



Salon Essentials



PR116 Waterproof Salon Gown ■ Suitable for salons and barbers, 145cm long by 123cm wide, Waterproof and bleach resistant, Adjustable tear release fastening at the back
 ■ 100% Polyester with Polyurethane coating, 110gsm ■ 2 colours



PR118 All Purpose Waterproof Gown ■ Waterproof and bleach resistant, Adjustable tear release fastening, Elasticated cuffs, Two side pockets, Shaped fit to the body
 ■ 100% Polyester with Polyurethane coating, 110gsm ■ Sizes: S/M, L/XL
 ■ 3 colours



Back detail



PR115 Waterproof Bib Apron ■ Adjustable buckle on neckband, Waterproof and bleach resistant, 90cm self fabric ties ■ 100% Polyester with Polyurethane coating, 110gsm ■ 8 colours



Waterproof, bleach resistant salon gowns

PR117 Long Sleeve Waterproof Salon Gown ■ Waterproof and bleach resistant for use in salons and barbers, Elasticated cuffs, Adjustable tear release fastening
 ■ 100% Polyester with Polyurethane coating, 110gsm ■ 1 colour



Healthcare Uniforms

PR605 'Daisy' Healthcare Tunic ■ V-neck styling, Concealed zip fastening with press stud, Two curved front pockets, Contrast trim on neckline, sleeves and pockets ■ 65% Polyester, 35% Cotton, 195gsm ■ Sizes: **XS/8 – 5XL/24** ■ 3 colours



PR514 'Poppy' Healthcare Trouser ■ Cross over waistband with two button fastening, Zip fly, Belt loops, Two slanted front pockets ■ 65% Polyester, 35% Cotton, 195gsm ■ Sizes: **XS/8 – 5XL/24** ■ 1 colour



OEKO-TEX®
CONFIDENCE IN TEXTILES
STANDARD 100
11-55731 SHIRLEY

PR605

PR514



PR604 'Vitality' Healthcare Tunic ■ Soft collar styling, Concealed zip fastening and press stud, Two slanted front pockets, Contrast trim on neckline, sleeves and pockets ■ 65% Polyester, 35% Cotton, 195gsm ■ Sizes: **XS/8 – 5XL/24** ■ 3 colours



PR604



SIZING

MODERN
FIT

TAILORED
FIT

CLASSIC
FIT

SLIM
FIT

WOMEN'S SHIRTS / POLOS / TEES / KNITWEAR / CHEF'S JACKETS / BEAUTY TUNICS & OUTERWEAR

Call size	2XS	XS	S	M	L	XL	2XL	3XL	4XL	5XL	6XL	7XL	8XL
Size	6	8	10	12	14	16	18	20	22	24	26	28	30
Bust to fit "	31	33	35	37	39	41	43	45	47	49	51	53	55
Bust to fit cm	79	84	89	94	99	104	109	114	119	124	129	134	139

WOMEN'S WAISTCOATS - PR621, PR623 & PR626

Call size	2XS	XS	S	M	L	XL	2XL
Size	6	8	10	12	14	16	18
Bust to fit "	27	29	32	34	37	40	44
Bust to fit cm	72	80	88	96	104	112	120

WOMEN'S TROUSERS & CHINOS - PR514, PR530, PR536 & PR570

Call size	XS	S	M	L	XL	2XL	3XL	4XL	5XL
Size	8	10	12	14	16	18	20	22	24
Waist to fit "	24	26	28	30	32	34	36	38	40
Waist to fit cm	59	64	69	74	79	84	89	94	99

MEN'S COLLARED SHIRTS

PR200, PR202, PR204, PR206, PR207, PR209, PR210, PR212, PR234 & PR236

Call size	S	S/M	M	M/L	L	L/XL	XL	XL/2XL	2XL	2XL/3XL	3XL	4XL	5XL	6XL
Collar "	14½	15	15½	16	16½	17	17½	18	18½	19	20	21	22	23
Collar cm	37	38	39½	41	42	43	44½	46	47	48	50	52	54	56
Chest to fit "	34	36	38	40	42	44	46	48	50	52	54	58	62	66
Chest to fit cm	87	92	96	102	107	111	117	122	127	132	137	147	157	167

MEN'S SOFT COLLARED SHIRTS, TEES, CHEF'S JACKETS, KNITWEAR & FLEECE GILET

PR206, PR217, PR218, PR219, PR220, PR221, PR222, PR238, PR244, PR245, PR246, PR247, PR250, PR252, PR254, PR256, PR258, PR649 & PR803

Call size	2XS	XS	S	M	L	XL	2XL	3XL	4XL	5XL
Chest to fit "	28	30	34	38	42	46	50	54	58	62
Chest to fit "	74	77	87	96	107	117	126	136	146	156

MEN'S WAISTCOATS - PR620, PR622 & PR625

Call size	2XS	XS	S	M	L	XL	2XL
Chest to fit "	30	32	36	40	44	46	52
Chest to fit cm	66	76	86	96	106	116	126

STUDED POLO SHIRT - PR610

Call size	S	M	L	XL	2XL	3XL
Chest to fit "	34	38	42	46	50	52
Chest to fit cm	92	100	108	116	124	132

MEN'S COOLCHECKER POLO SHIRTS - PR615, PR617 & PR618

Call size	XS	S	M	L	XL	2XL	3XL	4XL	5XL
Chest to fit "	33	35	37	39	41	44	46	48	51
Chest to fit cm	83	89	94	99	104	112	116	122	130

STUDED POLO, COOLPLUS POLO, SUSTAINABLE POLO, HEIQ POLOS, ZIP-THROUGH SWEAT - PR612, PR630, PR631, PR995, PR997 & PR808

Call size	XS	S	M	L	XL	2XL	3XL	4XL	5XL	6XL
Chest to fit "	33	35	38	41	44	47	50	53	56	59
Chest to fit cm	83	89	96	104	112	119	122	134	142	150

MEN'S TROUSERS & CHINOS - PR520 & PR560

Call size	XS	S	M	L	XL	2XL	3XL	4XL
Waist to fit "	30	32	34	36	38	40	42	44
Waist to fit cm	76	80	86	92	96	100	106	110

UNISEX CHEF'S TROUSERS - PR552, PR553, PR554, PR555 & PR556

Call size	XS	S	M	L	XL	2XL	3XL	4XL
Waist to fit "	28-30	32-34	34-36	36-38	38-40	42-44	44-46	46-48
Waist to fit cm	71-76	81-86	86-91	91-96	96-101	106-111	111-116	116-126

DISCLAIMERS

FACE COVERINGS DISCLAIMER: Premier Face Coverings, PR796 and PR799 are designed to aid defence against the spread of infection. We make no assurances that they can prevent transmission or infection of disease or viruses. They are not medical or clinical face masks and as such should not be used for this purpose. They should not be used in areas where infection level is high and in any exposure to high level heat sources or combustible substances. Remove and do not use then masks if you are suffering breathing difficulties or skin irritation. It is recommended that you wash these products before use.

HEIQ VIROBLOCK DISCLAIMER: The following products have been treated with a biocide to protect them from spoilage by microbes and germs. Active ingredient: silver chloride. PR994, PR995, PR996 and PR997 are powered by HeiQ Viroblock (technology) and are designed to aid defence against the spread of infection. Premier makes no assurances that they can prevent transmission or infection of disease or viruses. They are not medical or clinical garments and as such should not be used for this purpose. They should not be used under any circumstances where infection level is high and in any exposure to high level heat sources or combustible substances. Remove and do not wear these garments if you are suffering with breathing difficulties or skin irritation. It is recommended that you wash these products before use.



INDEX



SHIRTS & TEES

PR200	Men's Long Sleeve Poplin Shirt	10
PR202	Men's Short Sleeve Poplin Shirt	10
PR204	Men's Long Sleeve Fitted Poplin Shirt	13
PR206	Men's Roll Sleeve Poplin Bar Shirt	37
PR207	Men's Poplin Supreme Long Sleeve Shirt	16
PR209	Men's Poplin Supreme Short Sleeve Shirt	16
PR210	Men's Long Sleeve Security Shirt	18
PR212	Men's Short Sleeve Security Shirt	19
PR217	Men's Cross-Dye Roll Sleeve Poplin Bar Shirt	36
PR218	Men's Long-John Roll Sleeve Tee	55
PR219	Men's 'Comis' Sustainable Tee	56
PR220	Men's Long Sleeve Gingham Cotton Microcheck Shirt	27
PR221	Men's Short Sleeve Gingham Cotton Microcheck Shirt	27
PR222	Men's Jean Stitch Denim Shirt	31
PR234	Men's Long Sleeve Signature Oxford Shirt	22
PR236	Men's Short Sleeve Signature Oxford Shirt	23
PR238	Men's Cotton Rich Oxford Stripes Shirt	21
PR244	Men's Stretch Fit Cotton Poplin Long Sleeve Shirt	15
PR245	Men's Cotton Slub Chambray Long Sleeve Shirt	32
PR246	Men's Stretch Fit Cotton Poplin Short Sleeve Shirt	14
PR247	Men's Cotton Chambray Shirt - Fairtrade & Organic Cert.	29
PR250	'Mulligan' Check - Men's Long Sleeve Cotton Shirt	33
PR252	'Maxton' Check - Men's Long Sleeve Shirt	25
PR254	'Ginmill' Check - Men's Long Sleeve Cotton Shirt	35
PR256	'Sidehill' Check - Men's Long Sleeve Cotton Shirt	34
PR258	Men's Banded Collar 'Grandad' Long Sleeve Shirt	12
PR300	Women's Long Sleeve Poplin Blouse	10
PR302	Women's Short Sleeve Poplin Blouse	10
PR305	Women's Poplin 3/4 Sleeve Blouse	13
PR306	Women's Roll-Sleeve Poplin Bar Shirt	37
PR307	Women's Poplin Supreme Long Sleeve Shirt	16
PR309	Women's Poplin Supreme Short Sleeve Shirt	16
PR310	Women's Long Sleeve Security Shirt	18
PR312	Women's Short Sleeve Security Shirt	19
PR317	Women's Cross-Dye Roll Sleeve Poplin Bar Shirt	36
PR318	Women's Long John Roll Sleeve Tee	55
PR319	Women's 'Comis' Sustainable Tee	56
PR320	Women's Long Sleeve Gingham Microcheck Shirt	27
PR321	Women's Short Sleeve Gingham Microcheck Shirt	27
PR322	Women's Jean Stitch Denim Shirt	31
PR334	Women's Long Sleeve Signature Oxford Blouse	22
PR336	Women's Short Sleeve Signature Oxford Blouse	23
PR338	Women's Cotton Rich Oxford Stripes Shirt	21
PR344	Women's Stretch-Fit Cotton Poplin Long Sleeve Shirt	15
PR345	Women's Cotton Slub Chambray Long Sleeve Shirt	32
PR346	Women's Stretch-Fit Cotton Poplin Short Sleeve Shirt	14
PR347	Women's Cotton Chambray Shirt - Fairtrade & Organic Cert.	29
PR350	'Mulligan' Check-Women's Long Sleeve Cotton Shirt	33
PR352	'Maxton' Check - Women's Long Sleeve Shirt	25
PR354	'Ginmill' Check-Women's Long Sleeve Cotton Shirt	35
PR356	'Sidehill' Check-Women's Long Sleeve Cotton Shirt	34
PR358	Women's Banded Collar 'Grandad' Shirt	12

OUTERWEAR

PR803	Men's 'Artisan' Fleece Gilet	71
PR804	Women's 'Artisan' Fleece Gilet	71
PR808	Men's Spun Dyed Sustainable Zip-Through Sweat	72
PR809	Women's Spun Dyed Sustainable Zip-Through Sweat	72

WAISTCOATS

PR620	Men's Hospitality Waistcoat	38
PR621	Women's Hospitality Waistcoat	38
PR622	Men's Lined Polyester Waistcoat	38
PR623	Women's Lined Polyester Waistcoat	38
PR625	Men's Herringbone Waistcoat	39
PR626	Women's Herringbone Waistcoat	39

TIES & SCARVES

PR700	Plain Work Tie	19
PR705	Bow Tie	44
PR710	Clip-on Work Tie	19
PR711	Clip-on Cravat	19
PR715	Epaulettes	19
PR730	'Colours Originals' Plain Business Scarf	42

PR740	'Colours Collection' Plain Chiffon Scarf	40
PR750	'Colours Collection' Satin Tie	40
PR755	'Colours Collection' Satin Clip-on Tie	40
PR760	Multi-Stripe Tie	44
PR765	'Colours Originals' Fashion Tie	42
PR780	Micro Waffle Tie	43
PR781	Micro Dot Tie	43
PR782	Double Stripe Tie	44
PR783	Waffle Stripe Tie	43
PR784	Sports Stripe Tie	44
PR785	'Colours Originals' Fashion Clip-on Tie	42
PR786	Club Stripe Tie	43
PR787	Puppy Tooth Tie	43
PR788	Squares Tie	43
PR789	Slim Knitted Tie	45
PR793	Slim Tie	45

TROUSERS & CHINO'S

PR520	Men's Business Trousers	48
PR530	Women's Business Trousers	48
PR536	Women's Straight Leg Trousers	48
PR560	Men's Performance Chino Jeans	47
PR570	Women's Performance Chino Jeans	47
PR701	Clip-on Trousers Braces	47

KNITWEAR

PR400	'Essential' Acrylic Men's V-Neck Sweater	54
PR402	'Essential' Acrylic Women's Cardigan	54
PR692	Men's Crew Neck Cotton Rich Knitted Sweater	53
PR694	Men's Knitted V-Neck Sweater	50
PR695	Men's Quarter-Zip Knitted Sweater	52
PR696	Women's Knitted V-Neck Sweater	52
PR697	Women's Button-Through Knitted Cardigan	50
PR698	Women's Long Length Knitted Cardigan	52
PR699	Men's V-Neck Sleeveless Sweater	52

POLO SHIRTS

PR610	Studded Polo Shirt	66
PR612	Coolchecker® Studded Polo Shirt	67
PR615	Men's Coolchecker® Pique Polo Shirt	60
PR616	Women's Coolchecker® Pique Polo Shirt	60
PR617	Men's Long Sleeve Coolchecker® Pique Polo Shirt	66
PR618	Men's Contrast Tipped Coolchecker® Polo Shirt	63
PR619	Women's Contrast Tipped Coolchecker® Polo	63
PR630	Men's Coolchecker® Plus Pique Polo - Coolplus™	64
PR631	Men's Spun Dyed Sustainable Polo Shirt	59
PR632	Women's Coolchecker® Plus Pique Polo - Coolplus™	64
PR633	Women's Spun Dyed Sustainable Polo Shirt	59
PR995	Unisex Short Sleeve Polo Shirt, powered by HeiQ Viroblock	68
PR997	Unisex Long Sleeve Polo Shirt, powered by HeiQ Viroblock	68

FACE MASKS & COVERINGS

PR796	3 Layer Face Mask	75
PR797	PM2.5 Activated Carbon Mask Filter	75
PR799	Washable & Reusable Face Covering	74
PR994	3 Layer Face Mask, powered by HeiQ Viroblock	74

APRONS

PR102	100% Cotton Bib Apron - Organic Cert.	85
PR105	Zip Pocket Waist Apron	106
PR110	Striped Bib Apron	128
PR112	Cotton Bib Apron - Fairtrade Cert.	82
PR113	Cotton Denim Bib Apron - Organic & Fairtrade Cert.	84
PR114	Mid Length Cotton Apron - Fairtrade Cert.	82
PR115	Waterproof Bib Apron	110
PR119	Cross Back Interchangeable Apron Straps	95
PR120	Recycled Polyester & Cotton Bib Apron - Organic & Fairtrade Cert.	83
PR121	'Barley' Contrast Stitch Sustainable Bib Apron	81
PR122	'Regenerate' Sustainable Bib Apron	78
PR123	'Espresso' Bib Apron	94
PR125	Jean Stitch Denim Waist Apron	88
PR126	Jean Stitch Denim Bib Apron	88
PR127	'Domain' Contrast Denim Bib Apron	91

PR128	'Domain' Contrast Denim Waist Apron	91
PR129	Cross Back 'Barista' Bib Apron	95
PR130	'Calibre' Heavy Cotton Canvas Bib Apron	96
PR131	'Calibre' Heavy Cotton Canvas Waist Apron	96
PR132	'Chino' Bib Apron	98
PR133	'Chino' Waist Apron	98
PR134	'District' Waxed Look Denim Bib Apron	86
PR135	'Division' Waxed Look Denim Waist Apron	86
PR136	'Division' Waxed Look Denim Bib Apron with Faux leather	86
PR137	'Calibre' Heavy Cotton Canvas Pocket Apron	96
PR138	'Metro' Utility Hip Apron	90
PR139	Faux Leather Bib Apron	90
PR144	'Annex' Oxford Bib Apron	93
PR145	Children's Waterproof Apron	110
PR149	Children's Bib Apron	107
PR150	'Colours Collection' Bib Apron	103
PR151	'Colours Collection' Mid Length Apron	104
PR154	'Colours Collection' Bib Apron with Pocket	104
PR155	'Colours Collection' Three Pocket Apron	105
PR158	'Colours Collection' Bar Apron with Pocket	105
PR159	'Colours Collection' 2 in 1 Apron	107
PR162	'Colours Collection' Contrast Bib Apron	106
PR165	'Essential' Bib Apron	109
PR167	Polyester Bib Apron	109
PR996	Bib Apron, powered by HeiQ Viroblock	108

TABARDS

PR171	Pocket Tabard	113
PR172	Long Length Pocket Tabard	112
PR174	Waterproof Wrap Around Tunic	111
PR177	'Tulip' Wrap Around Tunic	111

CHEFSWEAR

PR552	Chef's Pull-on Trousers	130
PR553	'Essential' Chef's Trousers	130
PR554	Chef's Slim Fit Trousers	130
PR555	'Essential' Chef's Cargo Pocket Trousers	131
PR556	Artisan Chef's Jogging Trousers	131
PR648	Turn-up Chef's Hat	129
PR649	Coolchecker® Chef's T-shirt	127
PR652	Chef's Jacket Studs	129
PR653	Chef's Skull Cap	128
PR656	Short Sleeve Chef's Jacket	123
PR657	Long Sleeve Chef's Jacket	123
PR658	Chef's Zandana	129
PR660	Chef's Denim Jacket	119
PR661	Chef's Long Sleeve 'Cuisine' Jacket	127
PR664	Chef's Short Sleeve Stud Jacket	118
PR665	Chef's Long Sleeve Stud Jacket	118
PR670	Women's Short Sleeve Chef's Jacket	126
PR671	Women's Long Sleeve Chef's Jacket	126
PR900	'Essential' Short Sleeve Chef's Jacket	120
PR901	'Essential' Long Sleeve Chef's Jacket	121
PR902	Chef's Short Sleeve Coolchecker® Jacket	124
PR903	Chef's Long Sleeve Coolchecker® Jacket	124
PR906	Chef's Zip-Close Short Sleeve Jacket	117

BEAUTY & HEALTH

PR115	Waterproof Bib Apron	140
PR116	Waterproof Salon Gown	140
PR117	Long Sleeve Waterproof Gown	141
PR118	All-Purpose Waterproof Salon Gown	141
PR514	Women's 'Poppy' Healthcare Trousers	142
PR536	Women's 'Iris' Straight Leg Trousers	134
PR604	'Vitality' Healthcare Tunic	143
PR605	'Daisy' Healthcare Tunic	142
PR681	'Mika' Beauty and Spa Tunic	139
PR682	'Orchid' Beauty and Spa Tunic	138
PR683	'Blossom' Beauty and Spa Tunic	137
PR685	'Verbena' Linen Look Button Up Beauty Tunic	135
PR686	'Camellia' Beauty and Spa Tunic	139
PR688	'Viola' Linen Look Cut Neck Beauty Tunic	134
PR690	'Rose' Beauty and Spa Tunic	136
PR691	'Ivy' Beauty and Spa Tunic	136



THE **COLLECTION**

BUSINESSWEAR

HOSPITALITYWEAR

CHEFSWEAR

BEAUTY & HEALTHCARE